

**Baseline**

# Studio21

Residential

**Student Accommodation Furniture**

**BASELINE LIMITED**

Head Office, Showroom & Factory

Britannia Way  
Goole  
East Yorkshire  
DN14 6ES  
United Kingdom

Tel. +44 (0)1405 746001

Email. [sales@baseline-furniture.co.uk](mailto:sales@baseline-furniture.co.uk)  
[www.baseline-furniture.co.uk](http://www.baseline-furniture.co.uk)





## Studio21

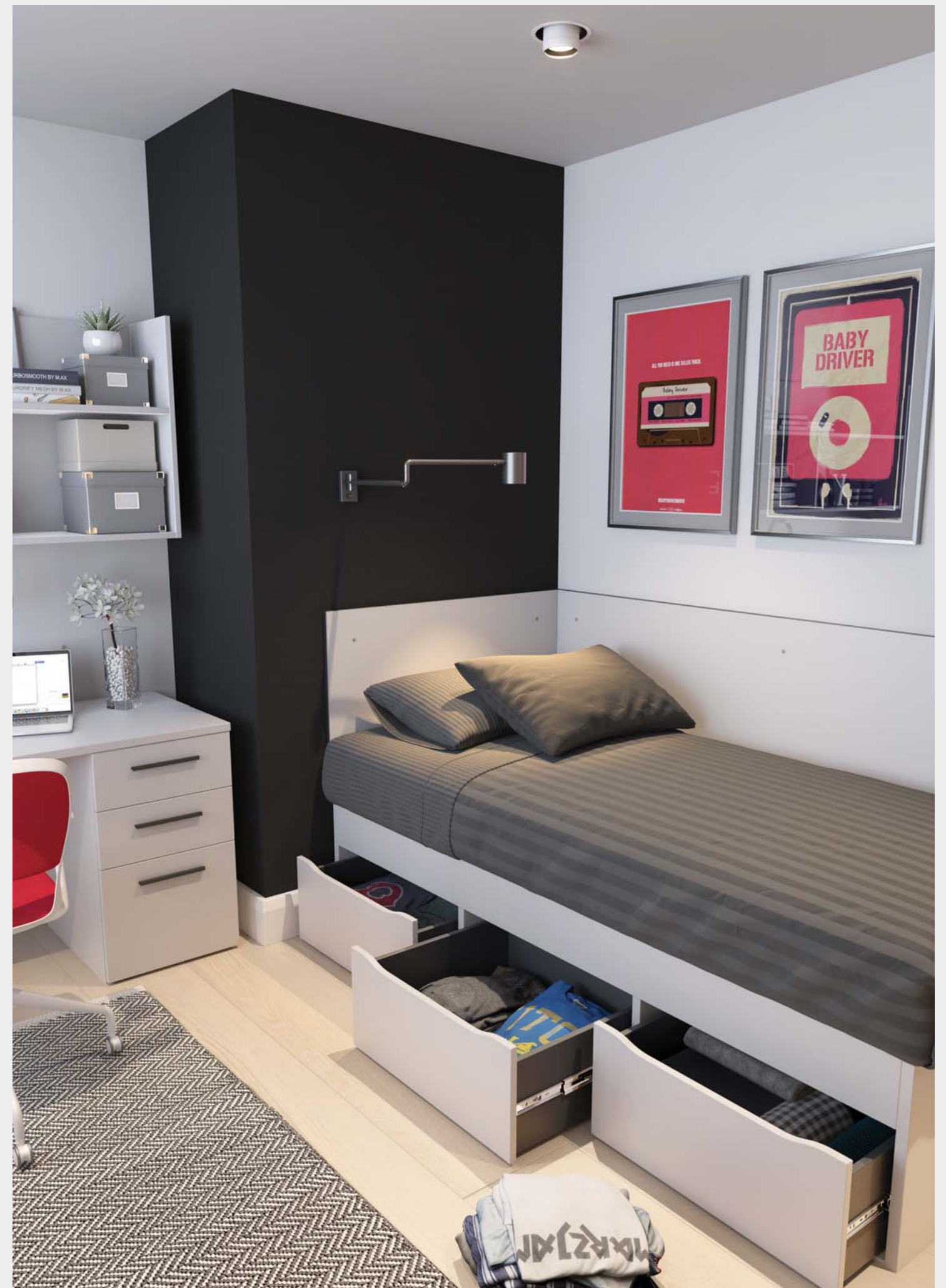
A stylish collection of residential furniture designed to improve the student experience.

Studio21 offers a comfortable and affordable range of furniture for student living. We recognise that the space students reside helps shape their experience. We carefully designed a range of furniture that is stylish, comfortable and space-efficient.

When specified in studio flats, shared apartments or dormitory rooms, Studio21 provides contemporary living furniture that creates the perfect place for students to call home.

We appreciate that space within student accommodation is often limited, therefore our designs present compact storage solutions within a small footprint to offer the most optimised use of the room.

























#### Standard Wardrobe Hanging Rail.

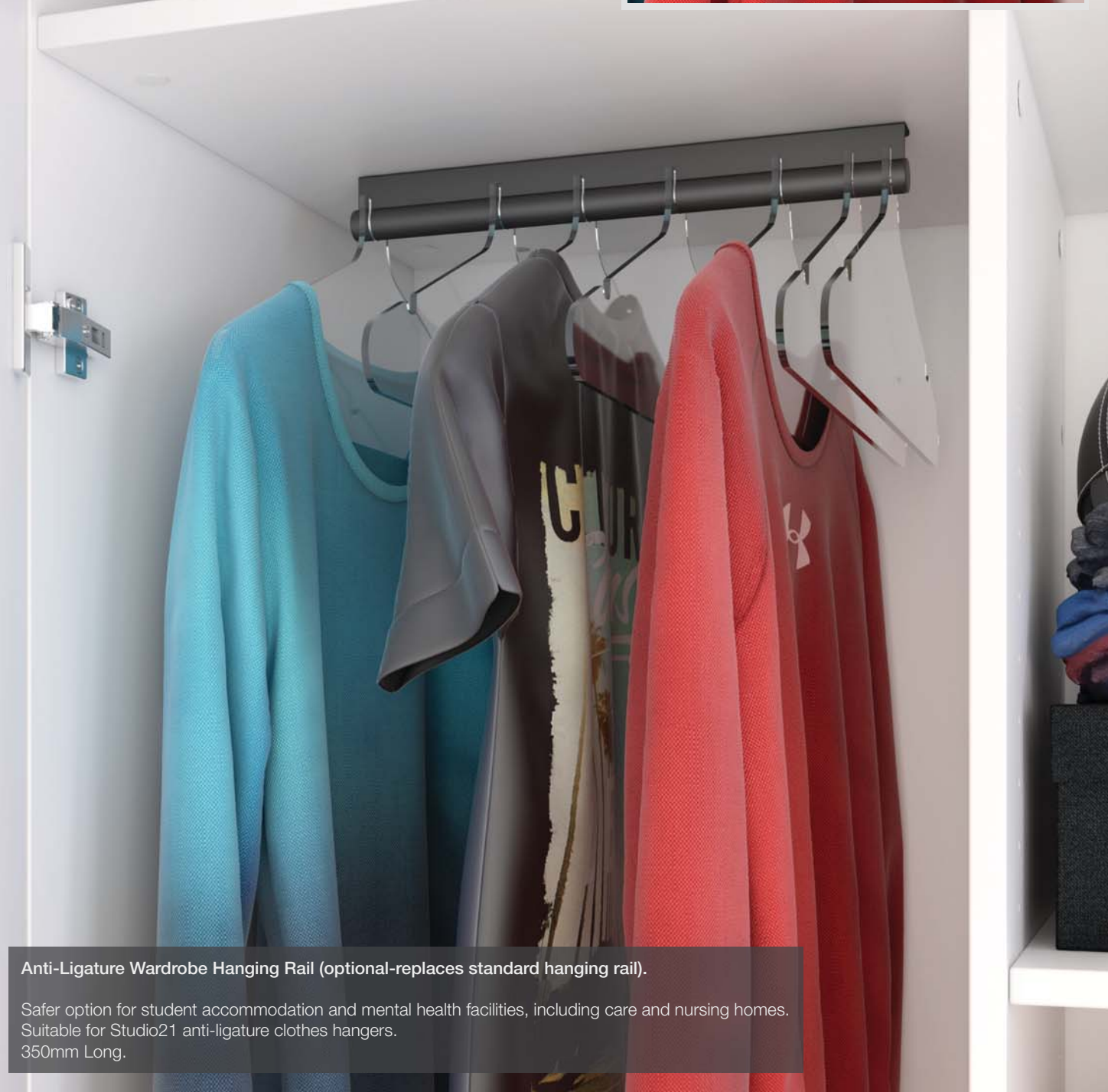
Suitable for a variety of consumer coat hanger styles.  
465mm Long.

#### Anti-Ligature Clothes Hanger.

Made of eco-friendly recycled clear polycarbonate, the anti-ligature clothes hangers simply slide on or clip onto the anti-ligature hanging rail.

Downward pressure will allow the clothes hanger to detach.

Polycarbonate benefits include a lightweight material that has anti-shatter properties, eliminating sharp edges.



#### Anti-Ligature Wardrobe Hanging Rail (optional-replaces standard hanging rail).

Safer option for student accommodation and mental health facilities, including care and nursing homes.  
Suitable for Studio21 anti-ligature clothes hangers.  
350mm Long.





Open Fronted Bedside Cabinet with Castors.  
Code: S21/BCOF/C



Single Drawer Bedside Cabinet with Castors.  
Code: S21/BC1D/C



Single Drawer and Right Hand Hinged Door Bedside Cabinet with Castors.  
Code: S21/BC1D1DRH/C



Single Drawer and Left Hand Hinged Door Bedside Cabinet with Castors.  
Code: S21/BC1D1DLH/C







3 Drawer Chest.  
Code: S21/3DC



4 Drawer Chest.  
Code: S21/4DC



5 Drawer Tall Boy.  
Code: S21/5DTB



6 Drawer Tall Boy.  
Code: S21/6DTB











Open Fronted Bedside Cabinet.

25mm Top panel and bottom panel.  
18mm MFC Carcase.

**Product Code:**    **S21/BCOF**                    Without Castors.  
**Size:**                    418mm wide x 500mm deep x 477mm high.

**Product Code:**    **S21/BCOF/C**                    With Castors.  
**Size:**                    418mm wide x 500mm deep x 500mm high.



Bedside Cabinet with 1 Drawer.

25mm Top panel and bottom panel.  
18mm MFC Carcase.

**Product Code:**    **S21/BC1D**                    Without Castors.  
**Size:**                    418mm wide x 500mm deep x 477mm high.

**Product Code:**    **S21/BC1D/C**                    With Castors.  
**Size:**                    418mm wide x 500mm deep x 500mm high.



Cover Caps as standard.

Supplied as standard, neatly concealing visible cam fittings.



Soft Roller Castors.

Our bedside cabinets are supplied with matt black castors.



Bedside Cabinet with 1 Drawer and 1 Door.  
Left Hand Hinged Door.

25mm Top panel and bottom panel.  
18mm MFC Carcase.

**Product Code:**    **S21/BC1D1DLH**                    Without Castors.  
**Size:**                    418mm wide x 500mm deep x 477mm high.

**Product Code:**    **S21/BC1D1DLH/C**                    With Castors.  
**Size:**                    418mm wide x 500mm deep x 500mm high.



Bedside Cabinet with 1 Drawer and 1 Door.  
Right Hand Hinged Door.

25mm Top panel and bottom panel.  
18mm MFC Carcase.

**Product Code:**    **S21/BC1D1DRH**                    Without Castors.  
**Size:**                    418mm wide x 500mm deep x 477mm high.

**Product Code:**    **S21/BC1D1DRH/C**                    With Castors.  
**Size:**                    418mm wide x 500mm deep x 500mm high.



Drawer Construction.

The drawer is supplied with a bottom mounted roller runner providing a smooth action.



Cabinet Hinges.

The mechanism of these concealed hinges offer 100° opening.





3 Drawer Chest.

25mm Top panel and bottom panel.  
18mm MFC Carcase.

Product Code:	Size:
S21/3DC	830mm wide x 500mm deep x 740mm high.
S21/3DC/D	830mm wide x 580mm deep x 740mm high.



4 Drawer Chest.

25mm Top panel and bottom panel.  
18mm MFC Carcase.  
Mandatory Wall Fixing Kit included.

Product Code:	Size:
S21/4DC	830mm wide x 500mm deep x 964mm high.
S21/4DC/D	830mm wide x 580mm deep x 964mm high.



5 Drawer Tallboy.

25mm Top panel and bottom panel.  
18mm MFC Carcase.  
Mandatory Wall Fixing Kit included.

Product Code:	Size:
S21/5DTB	830mm wide x 500mm deep x 900mm high.
S21/5DTB/D	830mm wide x 580mm deep x 900mm high.



6 Drawer Tallboy.

25mm Top panel and bottom panel.  
18mm MFC Carcase.  
Mandatory Wall Fixing Kit included.

Product Code:	Size:
S21/6DTB	830mm wide x 500mm deep x 1125mm high.
S21/6DTB/D	830mm wide x 580mm deep x 1125mm high.



1800mm High Wardrobe.

2 x Doors.  
1 x Fixed shelf (A).  
2 x Adjustable shelves - right hand side (B).  
1 x Hanging rail - left hand side (C).  
1 x Full length frameless mirror. 300mm wide x 1200mm high.  
Mandatory Wall Fixing Kit included.

Product Code:	Size:
S21/W18	1000mm wide x 550mm deep x 1800mm high.
S21/W18/D	1000mm wide x 580mm deep x 1800mm high.



2000mm High Wardrobe.


2 x Doors.  
1 x Adjustable shelf (A).  
1 x Fixed shelf (B).  
2 x Adjustable shelves - right hand side (C).  
1 x Hanging rail - left hand side (D).  
1 x Full length frameless mirror. 300mm wide x 1200mm high.  
Mandatory Wall Fixing Kit included.

Product Code:	Size:
S21/W20	1000mm wide x 550mm deep x 2000mm high.
S21/W20/D	1000mm wide x 580mm deep x 2000mm high.

**Wardrobe Anti-Ligature Hanging Rail (Optional).**

Black Graphite - RAL 9004

Suffix Code: /ALHR



**Anti-Ligature Clothes Hanger.**

4mm Clear Polycarbonate.  
Supplied in pack of 5.



Suffix Code: S21/ALCH



**Wall Fixing Kit (Supplied).**

All Wardrobes, Top Box and Tallboy units **MUST** be secured with the included Wall Fixing Kit.

Additional kits available.  
Product Code: S21/WFK







3 Drawer Desk.

25mm Top panel.  
18mm MFC Carcase.  
2 x Storage drawers and 1 x filing/deep drawer.  
Central cable port Included.  
Left hand or right hand desks available. Left hand shown.

Product Code:	Size:
S21/3DD14/LH	1400mm wide x 550mm deep x 740mm high.
S21/3DD14/LH/D	1400mm wide x 580mm deep x 740mm high.
S21/3DD14/RH	1400mm wide x 550mm deep x 740mm high.
S21/3DD14/RH/D	1400mm wide x 580mm deep x 740mm high.
S21/3DD16/LH	1600mm wide x 550mm deep x 740mm high.
S21/3DD16/LH/D	1600mm wide x 580mm deep x 740mm high.
S21/3DD16/RH	1600mm wide x 550mm deep x 740mm high.
S21/3DD16/RH/D	1600mm wide x 580mm deep x 740mm high.



3 Drawer Desk with Upstand.

25mm Top panel.  
18mm MFC Carcase.  
2 x Storage drawers and 1 x filing/deep drawer.  
180mm High upstand.  
Central cable port included.  
Left hand or right hand desks available. Left hand shown.

Product Code:	Size:
S21/3DD14/LH/U	1400mm wide x 550mm deep x 740mm high.
S21/3DD14/LH/D/U	1400mm wide x 580mm deep x 740mm high.
S21/3DD14/RH/U	1400mm wide x 550mm deep x 740mm high.
S21/3DD14/RH/D/U	1400mm wide x 580mm deep x 740mm high.
S21/3DD16/LH/U	1600mm wide x 550mm deep x 740mm high.
S21/3DD16/LH/D/U	1600mm wide x 580mm deep x 740mm high.
S21/3DD16/RH/U	1600mm wide x 550mm deep x 740mm high.
S21/3DD16/RH/D/U	1600mm wide x 580mm deep x 740mm high.

Wall Bookcase Unit.

18mm MFC Carcase.  
Undrilled.  
6 x Cover caps included (wall fixing screws not included).

Product Code:	Size:
S21/WBU/14	1400mm wide x 300mm deep x 660mm high.
S21/WBU/16	1600mm wide x 300mm deep x 660mm high.



Magnetic Combination Board.

Half whiteboard / half pinnable notice board.  
Anodised aluminium frame with rounded corners.  
Tightly woven corded hessian covering.  
Rounded corners for safety.  
9mm Pinboard core.  
Class 1 fire-rated for rooms and offices.  
9 Natural toned fabrics to choose from.  
Supplied with wall fixings.

Product Code:	Size:
S21/MCB9X6	900mm wide x 600mm high.
S21/MCB12X9	1200mm wide x 900mm high.
S21/MCB12X12	1200mm wide x 1200mm high.

Red.	Plum.	Barley Beige.
Black.	Graphite.	Silver.
Bottle Green.	Oxford Blue.	Smoky Blue.







Single Divan Base with 3 Independent Drawers.

25mm MFC Divan carcass.  
3 Independent 16mm black MFC drawers.

**Product Code:**    **S21/SD**

**Size:**                1978mm wide x 980mm deep x 450mm high.



**3/4 Divan Base with 3 Independent Drawers and 3 Rear Storage Compartments.**

25mm MFC Divan carcass.  
3 Independent 16mm black MFC drawers and 3 rear storage compartments.  
Mattress must be moved in order to gain entry to storage compartments.

**Product Code:**    **S21/34D**

**Size:**                1978mm wide x 1280mm deep x 450mm high.



**Single Divan Wall Protectors.**

Non handed.  
Comes complete with 1 short panel and 1 long panel.  
18mm MFC Carcase.  
Panels undrilled.  
10 x Cover caps included (wall fixing screws not included).  
Shown with Single Divan Base (not included).

**Product Code:**    **S21/SD/WP**

**Size:**                1996mm wide x 998mm deep x 600mm high.



**3/4 Divan Wall Protectors.**

Non handed.  
Comes complete with 1 short panel and 1 long panel.  
18mm MFC Carcase.  
Panels undrilled.  
10 x Cover caps included (wall fixing screws not included).  
Shown with 3/4 Divan Base (not included).

**Product Code:**    **S21/34D/WP**

**Size:**                1996mm wide x 1298mm deep x 600mm high.



**Single Contract Spring Mattress.**

Stitchbond fabric with pattern.  
Coil spring design.  
Tufting manufactured for longevity.  
Anti-allergy.  
Hypoallergenic.  
Mattress firmness - 4 (10 being firmest).  
Shown with Single Divan Base (not included).

**Fire retardant - rating Fr2**  
BS 7177:2008 + A1:2011 Medium hazard.

Test Methods.

- BS EN 597-1: 1995  
Furniture. Assessment of the ignitability of mattresses and upholstered bed bases. Ignition source: smouldering cigarette.
- BS EN 597-2: 1995  
Furniture. Assessment of the ignitability of mattresses and upholstered bed bases. Ignition source: match flame equivalent.
- BS 6807: 2006  
Methods of test for assessment of ignitability of mattresses, upholstered divans and upholstered bed bases with flaming types of primary and secondary sources of ignition.

**Product Code:**    **S21/SSM**

**Size:**                1900mm wide x 900mm deep x 180mm high.



**3/4 Contract Spring Mattress.**

Stitchbond fabric with pattern.  
Coil spring design.  
Tufting manufactured for longevity.  
Anti-allergy.  
Hypoallergenic.  
Mattress firmness - 4 (10 being firmest).  
Shown with 3/4 Divan Base (not included).

**Fire retardant - rating Fr2**  
BS 7177:2008 + A1:2011 Medium hazard.

Test Methods.

- BS EN 597-1: 1995  
Furniture. Assessment of the ignitability of mattresses and upholstered bed bases. Ignition source: smouldering cigarette.
- BS EN 597-2: 1995  
Furniture. Assessment of the ignitability of mattresses and upholstered bed bases. Ignition source: match flame equivalent.
- BS 6807: 2006  
Methods of test for assessment of ignitability of mattresses, upholstered divans and upholstered bed bases with flaming types of primary and secondary sources of ignition.

**Product Code:**    **S21/34SM**

**Size:**                1900mm wide x 1200mm deep x 180mm high.



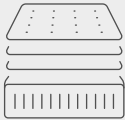
Mattress Fabric Pattern



Fire Retardant



Coil Sprung



Tufting Design



Anti-Allergy



Hypoallergenic



1 Year Guarantee



MFC Finishes.

The 6 finishes below are our standard MFC finishes.



Beech



Grey



Maple



Oak



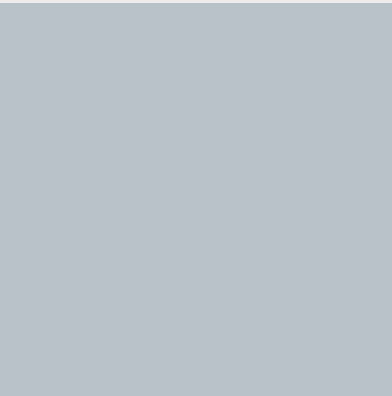
Walnut



White

Metal Handle Finishes.

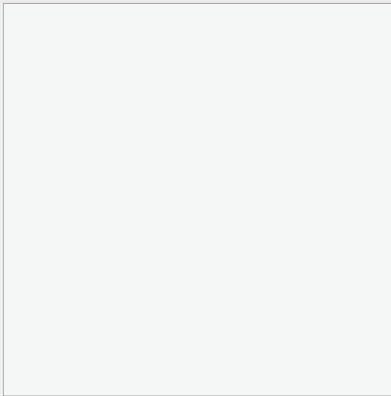
The handles in our portfolio can be finished in the below 3 metalwork colours.



Silver - RAL 9006 (Standard)



Black Graphite - RAL 9004



White - RAL 9003



Metal Flush Handle.

Supplied as standard, a sleek metal flush handle maintains the contemporary design.

**Size:** 200mm wide x 13mm deep x 19mm high.

Whilst every effort has been made to ensure accurate colours are illustrated in this PDF document, there may be a slight colour difference due to monitors and mobile devices, therefore please refer to our colour sample swatches prior to ordering.

Note: Room props, plants and lighting illustrated in the document not supplied.





FOREST STEWARDSHIP COUNCIL

As well as being incredibly stylish, practical and affordable, **Baseline Furniture** sources from FSC approved suppliers.

FSC is recognised by WWF as the “hallmark of responsible forest management.” It heralds a system that ensures products bearing the ‘tick tree’ logo are produced from well-managed forests and/or recycled materials.

This means that we are doing our utmost in helping to protect and maintain high conservation forests respecting the nature, communities and workers surrounding it. Respecting the environment is at the heart of everything we do, so when sourcing timber, we look to trusted organisations to give us peace of mind.

FSC intend to meet the needs of the present generation without compromising those of future generations and we couldn’t agree more.



OUR PLASTIC AWARENESS POLICY

We adhere to our Circular Economy business model that aims to deliver 100% recyclability.

The use of recycled plastic in place of virgin resin typically results in reduced energy consumption, lower cost, and reduced environmental impact.

Our Studio21 product range permits all plastic components to be recycled through curbside programs. The following illustrates what type of plastic is used within the range and its recyclable properties.

WHAT WE USE	RESIN TYPE	RESIN ID CODE
MFC Panel Edging.	Acrylonitrile Butadiene Styrene.	(ABS) 9
Adjustable Levelling Feet.	Polypropylene.	(PP) 5
Cover Caps	Low Density Polyethylene.	(LDPE) 4
Anti-Ligature Coat Hangers.	Polycarbonate.	(PC) 0

Packaging Materials:

Packaging Cling Film	Polyvinyl Chloride.	(PVC) 3
----------------------	---------------------	---------

- 

**Polyvinyl Chloride (PVC)**  
Extensively recycled in Europe through Vinyl 2010 and VinylPlus initiatives.
- 

**Low Density Polyethylene (LDPE)**  
LDPE is becoming a popular recycled plastic through curbside programs, due to the increase in shopping bag waste.
- 

**Polypropylene (PP)**  
Can be recycled through some curbside programs.
- 

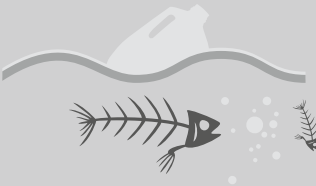
**Polycarbonate (PC)**  
Polycarbonate is fully recyclable, and its chemical composition is made from a natural resource, oil. The material provides an excellent yield for recycling by turning the used product back into granules, ready for re-manufacture.
- 

**Acrylonitrile–Butadiene–Styrene (ABS)**  
ABS is recycled by first shredding used plastics to produce shredded plastics. After this step, metals and undesirable plastics are separated from the shredded plastics to produce separated plastics.

WE DO NOT USE ANY PRODUCT CONTAINING MICROBEADS IN OUR COMPANY, WHETHER FOR CLEANING OR MANUFACTURING PURPOSES.

Microbeads are tiny pieces of plastic that are added to everyday products. They are most frequently made of polyethylene but can be of other petrochemical plastics such as polypropylene and polystyrene.

Microbeads are tiny, and may seem harmless, but 100,000 microbeads are washed down the sink with a single application of some products, ending up in the sea and the food chain.







SUPPORT

We pride ourselves on our friendly and approachable service and it's important to us that our customers know we care. We deliver a blend of innovation and expertise that comes from years of experience in various sectors, resulting in an understanding of the processes throughout a project.

Because every customer is unique, different levels of support are offered, tailored to suit each customer's strengths.

Our customer support team will continue to provide after sales support, long after the purchase and installation of a product. We understand our client's needs and we're here every step of the way, with what we believe is a personalised service, remembered for years to come.



MANUFACTURING

We understand that the quality of our products is a reflection on British Manufacturing, leading us to ensure the technology we invest in streamlines our manufacturing methods, reduces production flows, substantially increases output and also assists in achieving our ambitious sustainability targets, whilst maintaining our excellent quality standards.



**Baseline**

A BRITISH COMPANY

PRODUCT GUARANTEE

Our products carry a 5 Year Guarantee.

Every product is thoroughly examined prior to delivery and is guaranteed to give 5 years of satisfaction, when used for the purpose for which it was intended.

Should any fault develop, we agree to repair or replace any defective parts without charge, providing the product and its components have not been altered.

CONTINUITY OF SUPPLY

Whilst we reserve the right to alter, amend and improve our product, it is our policy to offer continuity for existing installations. We therefore ensure the design and modular compatibility for a period of up to five years.

Special requirements may be accommodated, by prior arrangement.

