



NORTON
SPECIFICATION GUIDE 2023



Baseline office furniture

A BRITISH COMPANY

Introducing Baseline, a contemporary solution that blends style and comfort with affordability, making it ideal for modular and short-term office buildings.

Baseline allows you to work in a sophisticated and comfortable surrounding with desks, filing cabinets and bookcases, assembled and dismantled easily. Cables for laptops, printers and phones can be installed and neatly managed with the option of including a simple wire management tray.

It's robust design provides a suitable solution to heavy industries and when at the end of its lifecycle, each unit is fully recyclable.

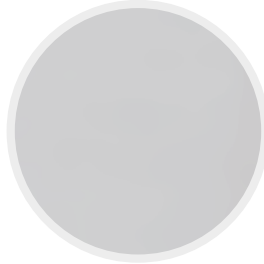
Discover our Norton range, finished in a Beech, Grey, Maple, Oak, Walnut or White MFC with a Silver (RAL 9006) frame.

Standard MFC Finishes

Beech (BB)



Grey (BG)



Maple (BM)



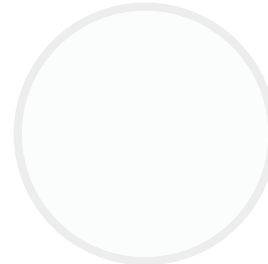
Oak (BO)



Walnut (BWA)

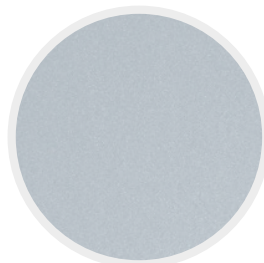


White (BWH)



Metalwork Finishes

Silver RAL 9006

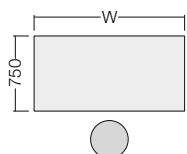


Norton Desking

Lead Time: Standard (All products are manufactured to order and when 'Standard Lead Time' is quoted (7 – 10 days), this may vary dependant on volume ordered, factory capacity and distribution requirements at the time of ordering. For more information please contact your Dealer Business Manager or the Customer Services Team for clarification.)

Wood: 18mm MFC top panel available in Beech, Grey, Maple, Oak, Walnut and White

Metalwork: Available in Silver RAL 9006



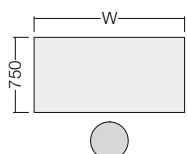
Norton Rectangular Desking With Double Pedestal.

18mm MFC top panel.
Silver RAL 9006 metalwork.
2mm ABS edging.
Complete with 2 x fixed pedestals.
3 x single drawers / 1x single and 1x filing drawers.
Pedestals can be located either side of the desk.
Silver plastic handles as standard.
Optional Black Graphite or White plastic handles.
Lockable, includes 2 x keys.

Product Code	Size w/d/h (mm)
--------------	-----------------

DP72	1800 x 750 x 740
------	------------------

DP60	1500 x 750 x 740
------	------------------



Norton Rectangular Desking With 2 Drawer Pedestal.

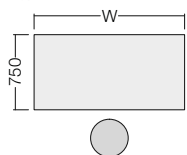
18mm MFC top panel.
Silver RAL 9006 metalwork.
2mm ABS edging.
Complete with 1 x fixed pedestal.
1 x single and 1 x filing drawers.
Pedestal can be located either side of the desk.
Silver plastic handles as standard.
Optional Black Graphite or White plastic handles.
Lockable, includes 2 x keys.

Product Code	Size w/d/h (mm)
--------------	-----------------

SPF72	1800 x 750 x 740
-------	------------------

SPF60	1500 x 750 x 740
-------	------------------

SPF48	1200 x 750 x 740
-------	------------------



Norton Rectangular Desking With 3 Drawer Pedestal.

18mm MFC top panel.
Silver RAL 9006 metalwork.
2mm ABS edging.
Complete with 1 x fixed pedestal.
3 x single drawers.
Pedestal can be located either side of the desk.
Silver plastic handles as standard.
Optional Black Graphite or White plastic handles.
Lockable, includes 2 x keys.

Product Code	Size w/d/h (mm)
--------------	-----------------

SP72	1800 x 750 x 740
------	------------------

SP60	1500 x 750 x 740
------	------------------

SP48	1200 x 750 x 740
------	------------------



Norton Secretarial Return With 3 Drawer Pedestal.

18mm MFC top panel.
Silver RAL 9006 metalwork.
2mm ABS edging.
Complete with 1 x fixed pedestal.
3 x single drawers.
Silver plastic handles as standard.
Optional Black Graphite or White plastic handles.
Lockable, includes 2 x keys.

Product Code	Size w/d/h (mm)
--------------	-----------------

SRLH	1025 x 550 x 740
------	------------------

SRRH	1025 x 550 x 740
------	------------------

Norton Tables

Lead Time: Standard (All products are manufactured to order and when 'Standard Lead Time' is quoted (7 – 10 days), this may vary dependant on volume ordered, factory capacity and distribution requirements at the time of ordering. For more information please contact your Dealer Business Manager or the Customer Services Team for clarification.)

Wood: 18mm MFC top panel available in Beech, Grey, Maple, Oak, Walnut and White

Metalwork: Available in Silver RAL 9006



Norton Rectangular Table.

18mm MFC top panel.

Silver RAL 9006 metalwork.

2mm ABS edging.

Available to accommodate paper size A0 (841mm x 1189mm) and A1 (594mm x 841mm).

Product Code	Size w/d/h (mm)
REFA0	1340 x 960 x 830
REFA1	992 x 707 x 830



Norton Rectangular Meeting Table.

18mm MFC top panel.

Silver RAL 9006 metalwork.

2mm ABS edging.

25mm bolt on legs.

Product Code	Size w/d/h (mm)
T72	1800 x 750 x 740
T60	1500 x 750 x 740
T48	1200 x 750 x 740
T30	750 x 750 x 740
T48/24	1200 x 600 x 740
T24/24	600 x 600 x 740



Norton Circular Meeting Table.

18mm MFC top panel.

Silver RAL 9006 metalwork.

2mm ABS edging.

25mm bolt on legs.

Product Code	Size w/d/h (mm)
T60D	1500 (dia) x 740
T48D	1200 (dia) x 740



Norton Semi-circular Meeting Table.

18mm MFC top panel.

Silver RAL 9006 metalwork.

2mm ABS edging.

25mm bolt on legs.

Product Code	Size w/d/h (mm)
SCT60	1500 x 750 x 740



Norton Trapezoidal Meeting Table.

18mm MFC top panel.

Silver RAL 9006 metalwork.

2mm ABS edging.

25mm bolt on legs.

Product Code	Size w/d/h (mm)
TRAP60	1500 x 650 x 740
TRAP48	1200 x 650 x 740

Norton Tables

Lead Time: Standard (All products are manufactured to order and when 'Standard Lead Time' is quoted (7 – 10 days), this may vary dependant on volume ordered, factory capacity and distribution requirements at the time of ordering. For more information please contact your Dealer Business Manager or the Customer Services Team for clarification.)

Wood: 18mm MFC top panel available in Beech, Grey, Maple, Oak, Walnut and White

Metalwork: Available in Silver RAL 9006



Norton Rectangular Coffee Table.

18mm MFC top panel.
Silver RAL 9006 metalwork.
2mm ABS edging.
25mm bolt on legs.

Product Code	Size w/d/h (mm)
T72/C	1800 x 750 x 400
T60/C	1500 x 750 x 400
T48/C	1200 x 750 x 400
T30/C	750 x 750 x 400
T48/24/C	1200 x 600 x 400
T24/24/C	600 x 600 x 400



Norton Circular Coffee Table.

18mm MFC top panel.
Silver RAL 9006 metalwork.
2mm ABS edging.
25mm bolt on legs.

Product Code	Size w/d/h (mm)
T60D/C	1500 (dia) x 400
T48D/C	1200 (dia) x 400



Norton Semi-circular Coffee Table.

18mm MFC top panel.
Silver RAL 9006 metalwork.
2mm ABS edging.
25mm bolt on legs.

Product Code	Size w/d/h (mm)
SCT60/C	1500 x 750 x 400



Norton Trapezoidal Coffee Table.

18mm MFC top panel.
Silver RAL 9006 metalwork.
2mm ABS edging.
25mm bolt on legs.

Product Code	Size w/d/h (mm)
TRAP60/C	1500 x 650 x 400
TRAP48/C	1200 x 650 x 400



Norton Telephone Table.

18mm MFC top panel.
Silver RAL 9006 metalwork.
2mm ABS edging.
Complete with undershelf.

Product Code	Size w/d/h (mm)
TEL	750 x 400 x 740